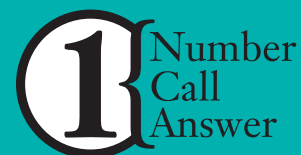


METHODIST HEALTHCARE Patient Placement Service

www.SAHealth.com/PPS



⁽²³⁶⁸⁾
210-575-ADMT
Or Toll Free ⁽²³⁶⁸⁾
877-575-ADMT

Methodist Hospital Stroke Center

Methodist Hospital offers Texas Neurosciences Institute, a full service neurological facility with more than 10 years of experience.

Our onsite neurological services include:

- ▶ Neurological Intensive Care Unit
- ▶ Neurosurgery
- ▶ Computed Tomography Angiography (CTA)
- ▶ Computed Tomography (CT)
- ▶ Magnetic Resonance Imaging (MRI)
- ▶ Magnetic Resonance Angiography (MRA)
- ▶ Laboratory services 24/7
- ▶ 24/7 Neurologist on call, 12 hours per day on site
- ▶ Medical/surgical floor specialized in neurological services
- ▶ Telemetry floor specialized in neurosurgical services

If your patient fits criteria for TPA, TPA may be initiated at your facility prior to call to Methodist Healthcare Patient Placement Services. Methodist Healthcare will auto accept all patients with TPA uninitiated.

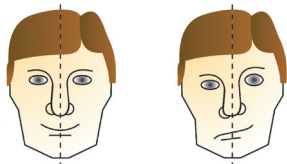
Stroke Scale

3 Warning Signs of a Stroke

Facial Droop

(have patient show teeth or smile):

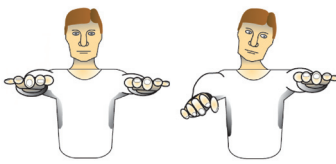
- ▶ **Normal:** both sides of face move equally
- ▶ **Abnormal:** one side of face does not move as well as other side



Arm Drift

(patient closes eyes and holds both arms straight out for 10 seconds):

- ▶ **Normal:** both arms move the same or both arms do not move at all (other findings, such as pronator grip, may be helpful)
- ▶ **Abnormal:** one arm does not move or one arm drifts down compared with the other



Abnormal Speech

(have the patient say “you can’t teach an old dog new tricks”):

- ▶ **Normal:** patient uses correct words with no slurring
- ▶ **Abnormal:** patient slurs words, uses the wrong words, or is unable to speak



Interpretation:

If any 1 of these 3 signs is abnormal, the probability of a stroke is 72%.

Thank you for partnering with us to improve stroke care in San Antonio!



Stroke Certified